

# Typical Expansion Joints

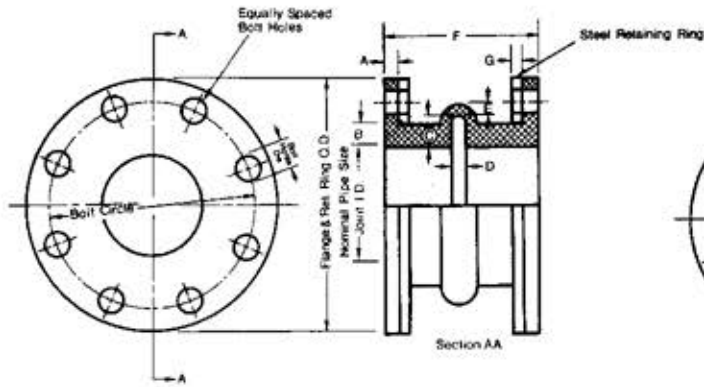


Diagram A1: Single Arch Type Expansion Joint

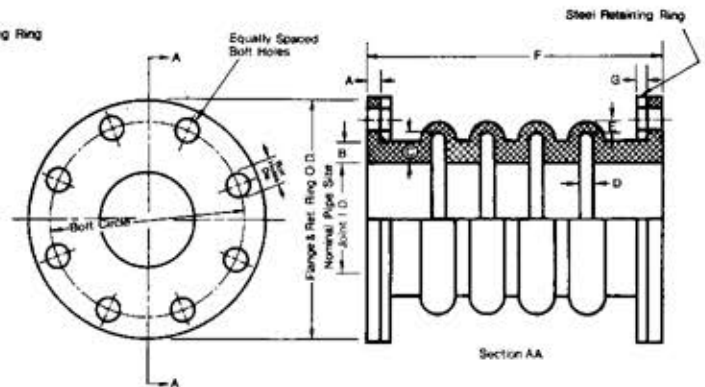


Diagram A2: Multiple Arch Type Expansion Joint

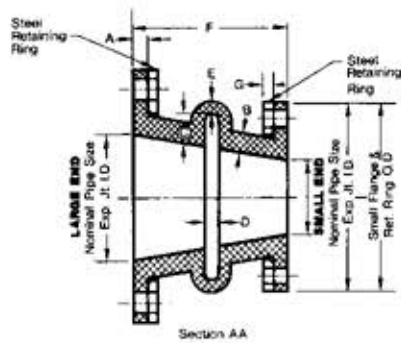


Diagram B1: Concentric Reducer Type Expansion Joint

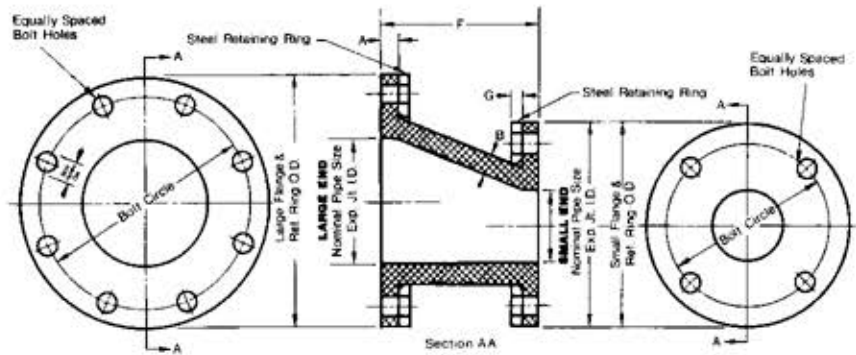


Diagram B2: Eccentric Reducer Type Expansion Joint

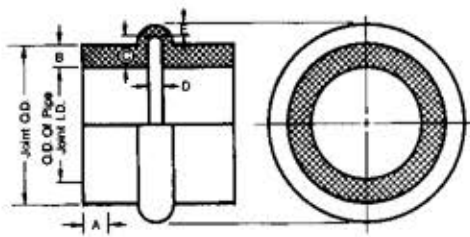


Diagram C: Sleeve Type Expansion Joint

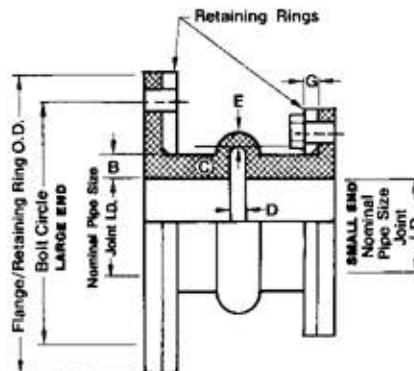


Diagram D1: Enlarged Flange Type Expansion Joint

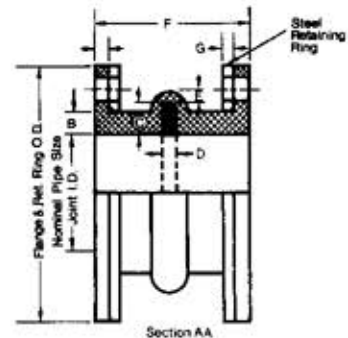


Diagram D2: Single Arch Type Expansion Joint with Filled Arch